

# Multiuser Setup White Paper

VERSION 7.1

Jade Software Corporation Limited cannot accept any financial or other responsibilities that may be the result of your use of this information or software material, including direct, indirect, special or consequential damages, or loss of profits. There are no warranties extended or granted by this document or software material.

You should be very careful to ensure that the use of this software material and/or information complies with the laws, rules, and regulations of the jurisdictions with respect to which it is used. No part of this document may be reproduced or transmitted in any form or by any means, electronic or mechanical, for any purpose, without the express written permission of Jade Software Corporation Limited.

The information contained herein is subject to change without notice. Revisions may be issued to advise of such changes and/or additions.

Copyright © 2016 Jade Software Corporation Limited.

All rights reserved.

JADE is a trademark of Jade Software Corporation Limited. All trade names referenced are the service mark, trademark, or registered trademark of the respective manufacturer.

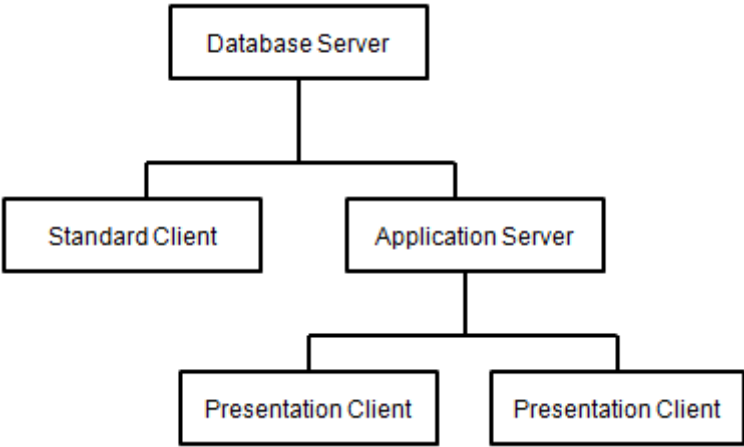
For details about other licensing agreements for third-party products, you must read the JADE **ReadMe.txt** file.

# Contents

<b>Contents</b>	<b>iii</b>
<b>Multiusers Setup</b>	<b>4</b>
Overview	4
Installing the Database Server	5
Installing a Standard Client	7
Installing an Application Server	8
Installing a Presentation Client	9

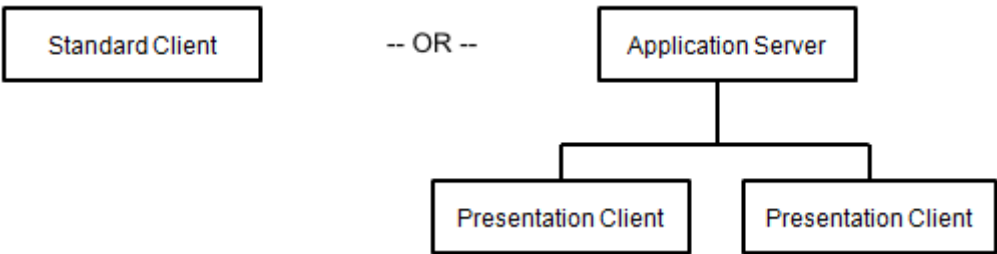
# Multiusers Setup

This white paper provides an example of the setup for clients and servers in a runtime or development JADE system. Although the client and server components could be installed on the same computer, the example assumes separate computers are used.



A database server must run a 64-bit Windows operating system. An application server, standard client, or presentation client can run 32-bit or 64-bit Windows.

When JADE is run in single user mode, there is no separate database server node. You can have a single standard client or a single application server, as shown in the following diagram.



In single user mode, the standard client or application server must run a 64-bit Windows operating system.

For more details about multiuser setup, see the following subsections.

## Overview

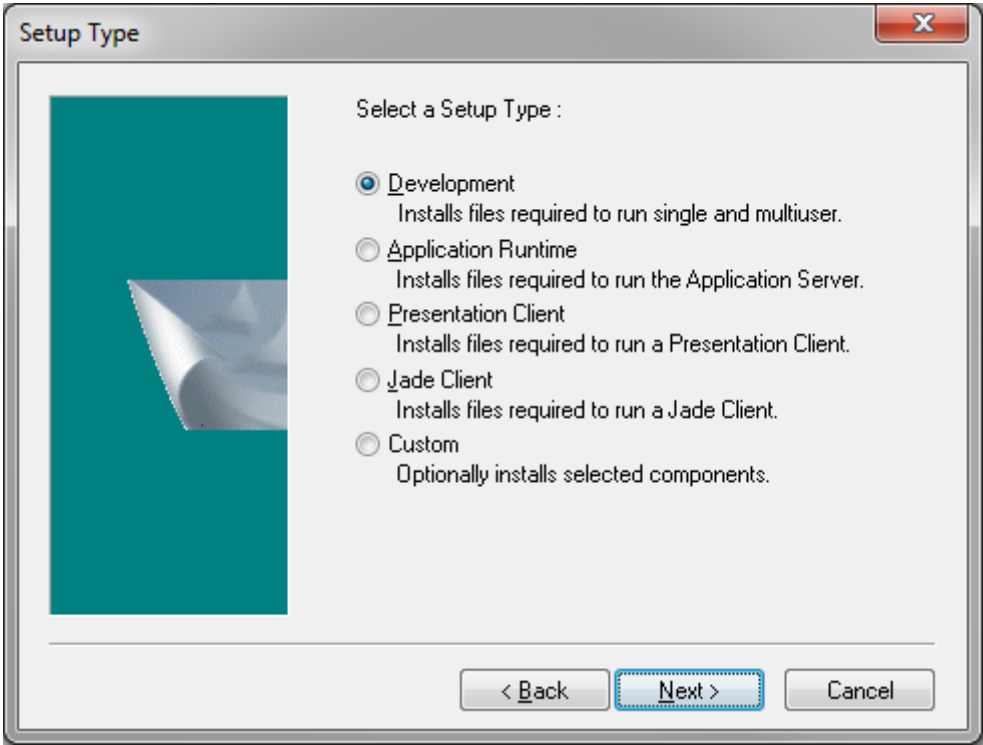
The following table contains installation information about the client and server components in the multiuser architecture example.

	Setup Type	Installation Directory	Computer Name	Listening Port
Database Server	Development	c:\dbserver	jadedata	35000
Standard Client	Jade Client	c:\jadeclient		

	Setup Type	Installation Directory	Computer Name	Listening Port
Application Server	Application Runtime	c:\appserver	jadeapps	20000
Presentation Client	Presentation Client	c:\thinclient		

In the previous table, the columns have the following meaning.

- **Setup Type** is the option selected from the Setup Type step when a component is installed.



- **Installation Directory** is the directory in which the JADE files are created.
- **Computer Name** and **Listening Port** contain information about the database server or application server that is used by standard clients or presentation clients, respectively, in establishing TCP/IP connections.

For more details about installing clients and servers, see the [JADE Installation and Configuration Guide](#). For more details about configuring initialization file parameters, see the [JADE Initialization File Reference](#).

## Installing the Database Server

In the example architecture, the database server is installed in the **c:\dbserver** directory of a computer called **jadedata**. When you install the database server component of a runtime or development system, select the **Development** option on the Setup Type dialog.

The following shortcut is created in the Start menu to run the database server program.

```
c:\dbserver\bin\jadrap.exe path=c:\dbserver\system
ini=c:\dbserver\system\jade.ini
```

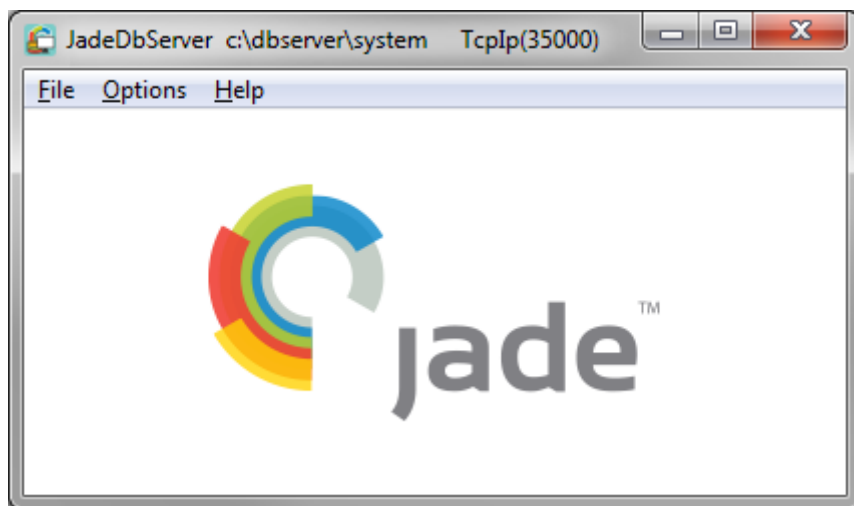
As the database server will listen on port 35000, the [JadeServer] section of the initialization file must be changed as follows.

```
[JadeServer]
NetworkSpecification1=Tcpip,Enabled,35000
```

**Tip** If you intend to run the database server as a Windows service, change the **NodeName** parameter to an appropriate service name *before* the service is registered, as shown in the following example.

```
[JadeServer]
NodeName=JadeDbServer
```

The following diagram shows the database server program running.

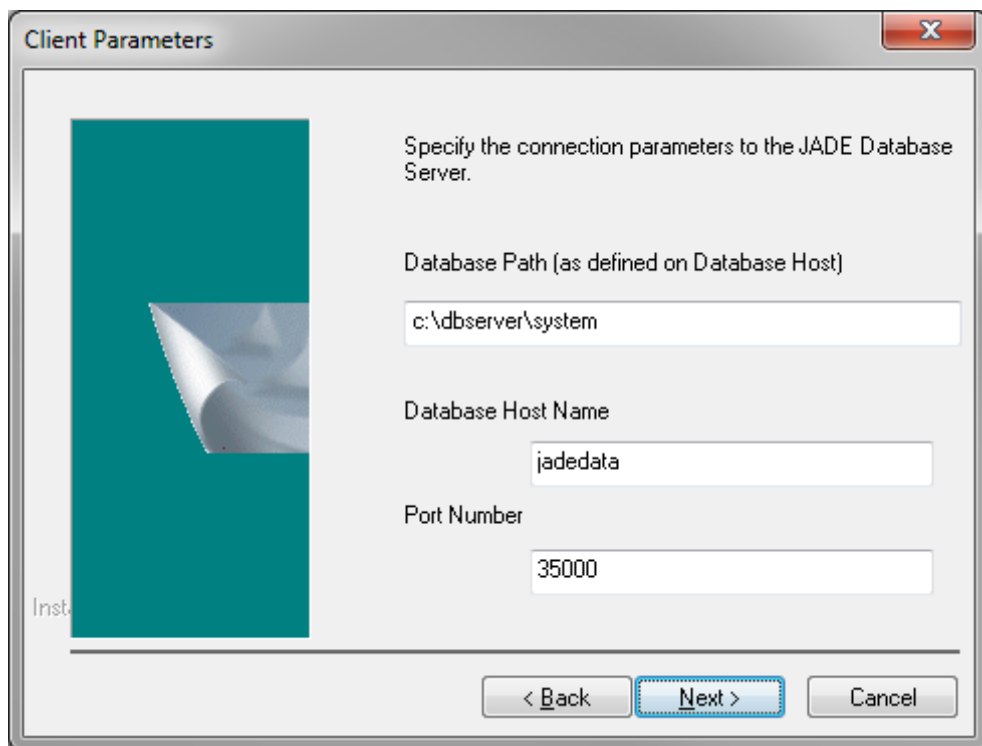


If you have run the program as an administrator, the **Service** command from the Options menu is enabled for you to register the database server as a Windows service.

For more details, see "[Running the Server Node as a Service](#)", in the *JADE Remote Node Access Utility User's Guide*.

## Installing a Standard Client

You can install a standard client by selecting the **Jade Client** option on the Setup Type dialog. The Client Parameters dialog enables you to enter TCP/IP information for the [JadeClient] section of the initialization file, and to enter the database location, which is used in the **path** parameter of the shortcut.



**Note** The **Database Host Name** and **Port Number** values provide the TCP/IP information for the client to connect to the server. The **path** parameter is specified from the perspective of the database server, and not as a mapped network drive from the perspective of the standard client.

The shortcut to run the JADE development environment is:

```
c:\jadeclient\bin\jade.exe path=c:\dbserver\system
ini=c:\jadeclient\bin\jade.ini
server=multiUser
app=Jade
schema=JadeSchema
```

**Note** The **app** and **schema** parameters, which specify the application to be run, are case-sensitive.

The shortcut to run an application called **Teller** in the **BankingSchema** schema is:

```
C:\jadeclient\bin\jade.exe path=C:\dbserver\system
ini=C:\jadeclient\bin\jade.ini
server=multiUser
app=Teller
schema=BankingSchema
```

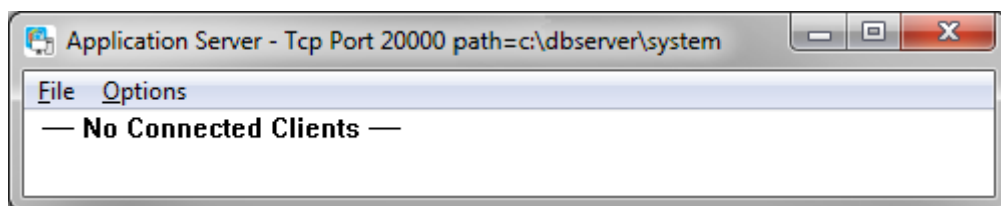
## Installing an Application Server

In the example architecture, the application server is installed in the **c:\appserver** directory of a computer called **jadeapps**. When you install an application server, select the **Application Runtime** option on the Setup Type dialog. The Client Parameters dialog enables you to enter the same information as for a standard client connection.

The installation creates a shortcut on the Start menu that uses 4505 as the port on which the application server listens for connections from presentation clients. As the application server is to listen on port 20000, you should change the shortcut as follows.

```
c:\appserver\bin\jadapp.exe path=c:\dbserver\system  
ini=c:\appserver\bin\jade.ini  
server=multiUser  
appServerPort=20000
```

The following diagram shows the application server program running.



If you have run the program as an administrator, the **Service** command from the Options menu is enabled for you to register the application server as a Windows service.

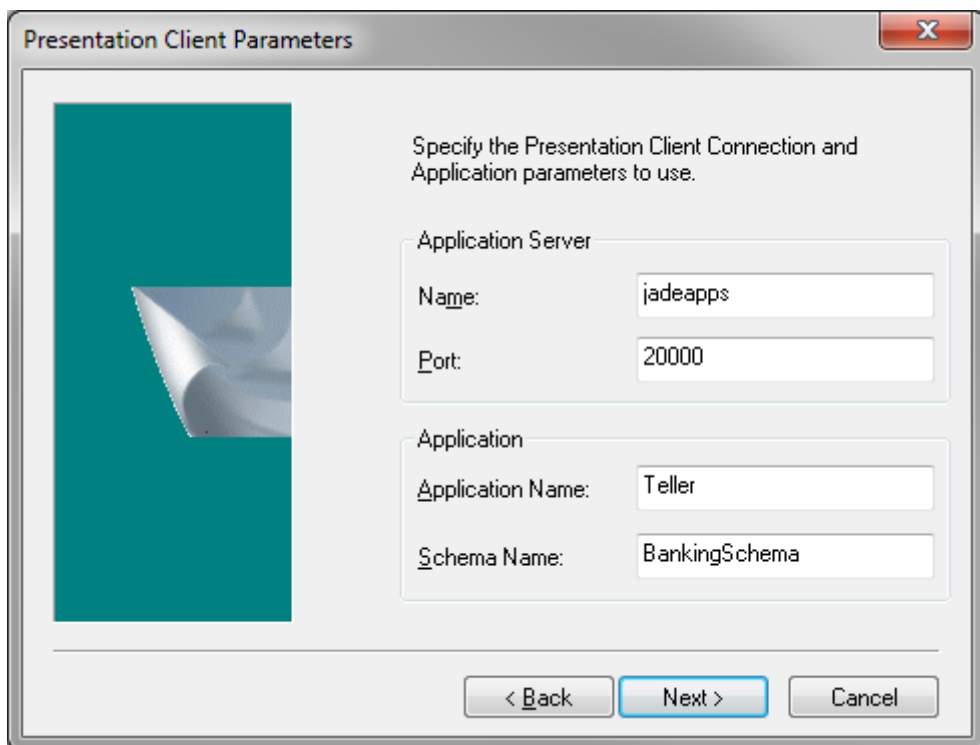
For more details, see "[Running an Application Server as a Service](#)", in the *JADE Thin Client Guide*.



## Installing a Presentation Client

Presentation clients can be used to run a user application and to run the JADE development environment.

You can install a presentation client by selecting the **Presentation Client** option on the Setup Type dialog. The Presentation Client Parameters dialog enables you to enter information to connect to the application server, and to enter the application and schema names of the application to be run.



**Presentation Client Parameters**

Specify the Presentation Client Connection and Application parameters to use.

**Application Server**

Name: jadeapps

Port: 20000

**Application**

Application Name: Teller

Schema Name: BankingSchema

< Back   Next >   Cancel

The following shortcut is generated by the installation.

```
c:\thinclient\bin\jade.exe ini=c:\thinclient\bin\jade.ini
appServer=jadeapps
appServerPort=20000
app=Teller
schema=BankingSchema
```