



Systems Management Development Centre

Release Notes

JADECare Systems Manager

Version 4.1.02

Document Version :	Draft
Document Date	23 August 2022
Relative to Version:	4.1.02
Document Status:	Final Release

Jade Software Corporation Limited cannot accept any financial or other responsibilities that may be the result of your use of this information or software material, including direct, indirect, special or consequential damages or loss of profits. There are no warranties extended or granted by this document or software material.

You should be very careful to ensure that the use of this software material and/or information complies with the laws, rules, and regulations of the jurisdictions with respect to which it is used. No part of this document may be reproduced or transmitted in any form or by any means, electronic or mechanical, for any purpose, without the express written permission of Jade Software Corporation Limited.

The information contained herein is subject to change without notice. Revisions may be issued to advise of such changes and/or additions.

Copyright © 2022-2023 Jade Software Corporation Limited.

All rights reserved.

JADE is a trademark of Jade Software Corporation Limited. All trade names referenced are the service mark, trademark, or registered trademark of the respective manufacturer.

Table of Contents

1. Overview	1
2. De-Implementation Warning.....	1
3. Warning.....	1
3.1. Deployment.....	1
3.2. JADE 2018	1
3.3. JADE 2020	1
3.4. JSM / JSA JADE version	2
3.5. Registered JADE Environments Support	2
4. Installation	3
4.1. PreRequisites.....	3
4.1.1. Commander.....	3
4.1.2. CardSchema	3
4.1.3. Register JADE 2020.....	3
4.1.4. JSM	3
4.1.5. JSA	3
4.1.6. JADE Requirements for JSA and JSM	4
4.1.7. SDS Environments	4
4.1.8. Other Software Requirements - RAR.....	5
4.1.9. JADE Environments.....	5
4.1.9.1. Clustered JADE Environments.....	5
4.1.9.2. JADE Environments Supported Versions	5
4.1.10. Certificates	5
4.1.11. ODBC Monitoring	5
4.2. Special Considerations	6
4.2.1. JADE 7.0 or 7.1 Migration.....	6
4.3. Migration Procedure for JSM with or <u>without</u> Tracker module	7
4.4. Migration for JSA.....	9
4.4.1. Commander.....	9
4.4.2. JSA	9
4.5. Product Repository.....	9
4.5.1. CardSchema Releases	9
4.5.2. JADE Releases.....	9
5. Descriptions of Changes and New Features	10
5.1. Version 4.1.02	10
5.1.1. Application JossBatch.....	10
5.1.1.1. Hot Fix Update Product Repository	10
5.1.1.2. Get Property Value	10
5.1.2. Application KarmaBatchInterface.....	10
5.1.2.1. Get Property Value	10
5.1.3. New Applications.....	10
5.1.3.1. Application JossWindowsUpdateManager.....	10
5.1.3.2. Application KarmaWindowsUpdateManager	10
5.1.3.3. Application JossScheduleMgr	11
5.1.4. Maintenance of Central Deployment Repository	11
5.1.5. Deployment.....	11
5.1.5.1. RPS Node	11
5.1.5.2. Ini File Option [JSMDeployment]	
JariEnhancedVersionCheck.....	11
5.1.6. Backup, Deployment and Task Scheduling Scripts	11

5.1.7.	Windows Update Patching Automation	12
5.1.8.	System Global Options	12
5.1.9.	Environment Maintenance	13
5.1.10.	Deploy Summary	13
5.1.11.	JARI List	13
5.1.12.	JARI Authorisation	13
5.1.13.	JARI Multi-Approval	13
5.1.14.	System View	14
5.2.	Version 4.1.01	15
5.2.1.	Performance Alert Sets.....	15
5.2.2.	Deployment.....	15
5.2.2.1.	Auto-Deployment Definitions	15
5.2.2.2.	JadeAdmin, Autodist, cnwplugin Automatic Updates.....	15
5.2.3.	GUI Changes.....	15
5.2.3.1.	GlbXcf Summary	15
5.2.3.2.	Environment Maintenance.....	15
5.2.3.3.	Jade Environment Details Summary	16
5.2.3.4.	Jade Environment Licences Summary	16
5.2.3.5.	Jade Environment Maintenance Form	17
5.2.3.6.	Server Host Maintenance Form.....	18
5.2.3.7.	System Subview – Jade Environment	19
5.2.4.	JossBatch Application Functions	20
5.2.4.1.	Application Monitoring Update.....	20
5.2.4.2.	Change XCF Parameters	20
5.2.4.3.	Check Connected.....	20
5.2.4.4.	Initiate Global Parameter Distribution	20
5.2.4.5.	JMT Comparison Build	20
5.2.4.6.	Switch XCF Group.....	20
5.2.5.	KarmaBatchInterface Application Functions	21
5.2.5.1.	JMT Comparison Compare	21
5.2.5.2.	Restore an Environment from Backup	21
5.2.6.	Webhook Endpoint.....	21
5.2.6.1.	Script Builder	21
5.2.6.2.	Token Maintenance	21

1. Overview

This document outlines changes implemented for JADECare Systems Manager release 4.1 (and specifically 4.1.02). The key products referenced are:

- JADECare Systems Manager (JSM)
- JADECare Systems Agent (JSA)
- JADECare Start (CardSchema).

This release supports the management of JADE applications running on Windows platforms only.

2. De-Implementation Warning

None.

3. Warning

3.1. Deployment

Deployment of JADE 2016 is only allowed over a JADE 7.1 environment and is an UPGRADE rather than a migration.

The JADE 7.1 release requires a migration strategy when moving from JADE 7.0. There are two documented types of JADE migration: offline and 'high-availability'.

The JADECare Systems Manager deployment facility still provides a migration strategy for JADE 6.3 to JADE 7.0, JADE 6.3 to JADE 7.1 and JADE 7.0 and JADE 7.1, but this is an OFFLINE migration.

The JADECare Systems Manager (JSM) release provides a standalone High Availability Migration strategy, this contains scripts that are executed manually outside of JSM control.

NOTE:

- The three types of certify required as specified in the JADE 7.0 and 7.1 migration document are NOT done by JSM and you will need to orchestrate this with your JADECare operations representative.
- Any JADE 7 migration requires all SDS Secondaries to be re-cloned.
 - From JADE 6.3 to JADE 7.0
 - From JADE 6.3 to JADE 7.1
 - From JADE 7.0 to JADE 7.1

3.2. JADE 2018

Registration and deployment of the JADE 2018 and later service pack releases are supported.

JADE 2018 releases can only be deployed over JADE 2016 and JADE 2018 environments.

It is a requirement that SDS Environments have implemented JADE 2016 SP1 (16.0.02) before upgrading to JADE 2018.

3.3. JADE 2020

Registration and deployment of the JADE 2020 and later service pack releases are supported.

JADE 2020 releases can only be deployed over JADE 2018 and JADE 2020 environments.

JSM and JSA are implemented on the JADE 2020 release.

3.4. JSM / JSA JADE version

JSM and JSA 4.1.02 and later 4.1 releases, while supporting managed environments using the JADE 7.0, 7.1, 2016, 2018 and 2020 releases, are not supported using any release other than JADE 2020 as the runtime platform.

The 4.0.01 and later releases of JSM/JSA are only supported on the JADE 2018 release (18.0.01).

3.5. Registered JADE Environments Support

Note that from this release, only JADE Environments running on supported releases of JADE and JADECare Start (CardSchema) will be supported by JADECare Managed Service.

Supported JADE Releases are:

- JADE 2016 and JADE 2016 SP 1
- JADE 2018
- JADE 2020 and JADE 2020 SP 1

Supported CardSchema releases are:

- CardSchema 3.8.10 – recommended release for JADE 2016 (16.0.01) environments
- CardSchema 3.9.02 – minimum release for JADE 2016 SP 1 (16.0.02) environments
- CardSchema 3.9.03 – recommended release for JADE 2016 SP 1 (16.0.02) environments
- CardSchema 4.0.03 – recommended release for JADE 2018 (18.0.01) environments
- CardSchema 4.1.02 – recommended release for JADE 2020 (20.0.01) environments
- CardSchema 4.1.02 – recommended release for JADE 2020 SP 1 (20.0.02) environments

4. Installation

4.1. PreRequisites

4.1.1. Commander

When installing JSA 4.1.02, Commander 8.10.0.43 or later MUST be installed on the server.

When JSA connects with JSM the Commander version is checked and if not the appropriate level, an alert will be raised advising of this.

The deployment engine uses a new Commander requests that mandates this release of Commander.

Should a deployment be attempted where the Commander version is not the requisite version then the deployment will go to error state.

4.1.2. CardSchema

This release requires the **JossModel** schema (JSM/JSA) to have **CardSchema 4.1.02** as its superschema (which is provided as part of the migration)

The minimum version of **karma.dll** is **2.8.0.55 32- and 64-bit** for Windows..

4.1.3. Register JADE 2020

The JADE 2020 (20.0.01) release and hotfixes MUST be registered in the 4.1.01 release BEFORE JSM migration starts. This is checked as part of the migration start-up checks.

4.1.4. JSM

Requirements for JADECare Systems Manager 4.1.02 are as follows:

- JADE 2020 SP 1 (20.0.02) release and all registered hot-fixes.
- CardSchema v4.1.02 (see above)
- CNWCommander 8.10.0.43 or later
- JAWS 8.10.0.05 or later
- imaging.dll 1.0.0.3
- karma.dll for JADE 2020 SP 1 (version defined above in 4.1.2)
- cnldap.dll 1.0.0.17 64-bit for JADE 2020
- snmptrapd 1.0.1.11 for JADE 2020
- cnwIUpdateInstaller.dll 1.0.0.11

The imaging.dll is required for the real time graphing of system statistics for a nominated server host. The dll needs to be in the <JSM>\client\thinclient\download directory so that it is automatically deployed to thin-clients as required.

The karma.dll and cnldap.dll above are part of the CardSchema consistency.

JSM 4.1.02 supports the management of servers that are running JSA 4.1.01 or 4.1.02. Use of earlier versions of JSA with JSM 4.1.02 is not supported.

4.1.5. JSA

Requirements for JADECare Systems Agent 4.1.02 are as follows:

- JADE 2020 SP 1 release and all latest hot-fixes.
- CardSchema v4.1.02 (see above)
- CNWCommander 8.10.0.43 or later

- JAWS 8.10.0.05 or later
- karma.dll for JADE 2020 SP 1 (version defined above in 4.1.2)
- cnwsqll.dll 1.0.0.24
- cnwsqybound.dll 1.0.0.8
- cnwIUpdateInstaller.dll 1.0.0.11

To access the new functionality in this release, JSAs should be upgraded to 4.1.02 at the earliest opportunity following the JSM 4.1.02 installation.

This version of JSA is qualified to run on:

- Windows 2008 R2
- Windows 2012
- Windows 2012 R2
- Windows 2016
- Windows 2019

Additional notes for JSA:

- When upgrading JSA for a host that is part of a Windows cluster, **note that all hosts in the cluster must be upgraded at the same time**. Mixtures of JSA versions in the same cluster are not supported and may lead to strange reporting in JSM.
- When upgrading JSA where a host contains one or more managed environments that are part of a SDS Environment, then all servers that host any member of the SDS Environment must also be upgraded. Deployments are not permitted to SDS Environments where they are managed by disparate JSAs.
- The [Karma] ini file section for JSA must contain the same values for the following keywords as JSM:
 - ◆ MasterCustomerId
 - ◆ MasterCustomerName
 - ◆ MasterDomainName
- JADE 2020 SP 1 release + all latest hotfixes
- CardSchema 4.1.02 (see above)
- For Windows:
 - CNWCommander – same as for JSM
 - JAWS – same as for JSM
 - karma.dll for JADE 2020 SP 1 (version defined above in 4.1.2)

4.1.6. JADE Requirements for JSA and JSM

JADE 2020 SP 1 ANSI release plus all latest hotfixes.

JSM thin-clients should be updated to use the 64-bit thin-client.

4.1.7. SDS Environments

Only SDS Secondary Relational databases of type **Full Extent** and **Mapped Extent** are supported by the JADECare toolset. Usage of **Working Set** databases may cause deployments to fail and this type has not been tested or qualified.

4.1.8. Other Software Requirements - RAR

To support JADECare deployment, the use of RAR is now required. The following additional software is required for JSM and JSA for any deployments:

JSM : RAR 3.30 or later

JSA : UNRAR 3.41 or later

This software can be obtained from <http://www.rarlabs.com>.

4.1.9. JADE Environments

4.1.9.1. Clustered JADE Environments

Note that any JADE environments / hosts that are **clustered** should be using the following **minimum** software levels to access all the cluster management features in JSM 4.1.02:

- CardSchema 3.8.10 or later
- For Windows:
 - CNWCommander 8.10.0.43 or later
 - JAWS 8.10.0.05 or later
 - karma.dll 2.8.0.26 for JADE 7.1 (or later)

4.1.9.2. JADE Environments Supported Versions

Only JADE releases 2016, 2016 SP1, 2018 and 2020 are currently supported by JADECare toolsets.

The recommended releases for CardSchema are :

3.8.10 for JADE 2016 (16.0.01) environments

3.9.03 for JADE 2016 SP 1 (16.0.02) environments

4.0.03 for JADE 2018 (18.0.01) environments

4.1.02 for JADE 2020 (20.0.01) environments

4.1.02 for JADE 2020 SP 1 (20.0.02) environments

4.1.10. Certificates

JSA version 4.1.02 uses SSL TCP/IP connections to connect to CNWCommander. With releases of CNWCommander from 8.7.0.1 onwards, the required certificates (below) will automatically be implemented by the CNWCommander software.

- ◆ commander_client.key
- ◆ commander_client.pem
- ◆ commander_client_ca.pem

These files are tailored for each toolset customer.

4.1.11. ODBC Monitoring

JSA version 4.1.02 requires cnwsqll.dll version 1.0.0.24 or later and this should be placed in the JSA runtime binaries location.

ODBC monitoring has been qualified against Microsoft SQL 2012, SQL 2014, SQL 2016.

4.2. Special Considerations

4.2.1. JADE 7.0 or 7.1 Migration

While the JSM/ JSA 4.1.02 release deployment engine supports the migration steps (to JADE 7.0 or JADE 7.1) as part of the JSM deployment process, this does NOT include:

- Any of the 3 certify steps that are a pre-requisite to such a migration
- The 'High-Availability' option documented in JADE's HighAvailabilityUpgradeSteps.doc document.
- The 'Collection Reblocking' function recommended after the JADE 7.0 migration.

A suite of scripts is now supplied by JADECare that provide the High-Availability Migration functions, refer to feature content below.

It is recommended that the following JADE documents be read and understood before starting any migration to JADE 7.0 or JADE 7.1 and that early discussion of requirements occurs with your JADECare toolset Operations representative:

- ReadMeInstallSteps.doc
- ReleaseInfo.pdf
- HighAvailabilityUpgradeSteps.doc
only required to be read should an offline JADE 7.0 migration be considered unsuitable. This will be an entirely manual operation not supported by JSM.

4.3. Migration Procedure for JSM with or without Tracker module

It is strongly recommended that at least one test migration be conducted, using a copy of the full production system. This will allow you to determine the total time required to complete the migration and will minimise the chance of unforeseen problems occurring during the actual production system upgrade.

NOTES

1. The upgrade script will migrate the JSM database to JADE 2020 + all latest hotfixes registered in JSM.
2. WARNING : This upgrade will **DELETE** all users schemas other than:
 - CardSchema
 - JossModel
 - JossControl
 - Joss
 - ScmControl
 - ScmSchema
 Any required user-schemas will need to be reloaded manually after the upgrade

1. Prior to starting the migration and upgrade, ensure that:
 - For this release the JADE 2020 SP 1 (20.0.02) release and hot fixes MUST be registered. Require minimum hot fix of 20.0.02.029.
 - you have a full backup of your JSM system.
2. To expedite database reorganisation
 - ini file option **ReorgWorkDirectory** in the [**JadeReorg**] section may optionally be defined to point to a different physical disk to the one housing the database.

This should only be set if there is insufficient disk to reorg the above mapfiles and will extend the outage by requiring the reorged files to be copied back to their original volume.
 - Ini file option **ReorgWorkerThreads** in the [**JadeReorg**] section should be defined as greater than one as there are a number of reorgs in this upgrade that can utilize multiple reorg workers.
3. Ensure that the keyword **SystemFileDirectory** in section [**PersistentDb**] specifies <default> or is not declared.
4. Delete any user-defined schemas that are subschemas of any one of the JADECare provided schemas
5. Copy all items from the release repository (contents of the sub-directory Migration) into JSM's <env>/server/c_misc directory
 - Binfiles
 - _4_1_02_Migration.bat
 - 01_JossModel_interim.scm and ddb
 - 02_JossControl_interim.scm and ddb
 - 03_Move_Delete_Items.jcf
 - 04_Move_Delete_Items.jcf
 - 05_CardSchema4_1_02.scm and ddb
 - 06_JossModel4_1_02.scm and ddb
 - 07_JossControl4_1_02.scm and ddb
 - 08_Joss4_1_02.scm and ddb

- 09_ScmControl4_1_02.scm and ddb
 - 10_ScmSchema4_1_02.scm and ddb
 - jsm_menu_extract.txt
 - scm_noise_words.txt
6. Edit the file _4_1_02_Migration.bat as follows:
- Replace literal <JSM environment name> with the JSM's host environment name
 - Replace literal <database drive> with the database drive letter for JSM
7. Start the migration by executing _4_1_02_Migration.bat (may be started while JSM is online)
- Checks that required files are resident
 - Loads 02_JossControl_interim.scm and ddb

There will be methods in error at this juncture, this is expected!

- Performs JSM checks to ensure:
 - the database is an expected state.
 - That the JADE 2020 SP 1 (20.0.02) release has been registered in JSM and physically exists in the product repository
- Executes Create_Delete_Schemas – if unexpected user-schemas are present, creates a command file to delete these schemas (so as to avoid load conflicts)
- Loads 01_JossModell_interim.scm and ddb
- Loads 02_JossControl_interim.scm and ddb
- Executes the pre-migration script to:
 - Refactor the ProcessLicencesLeft into new class structures and purge old instances
 - Refactor the auto-deployment information into AutoDeploymentDetails instances
 - Update JSM's JADE and CardSchema versions and copy JADE 2020 base release and hotfixes into appropriate altos directories
 - Copies the JADE 2020 SP 1 binaries into the \server\c_bin directory
 - Updates the \server\c_bin directory with JADECare binaries compiled for JADE 2020 (ie karma.dll)
- If 'delete schema' command file is present, execute jadloadb to delete defined schemas
- Performs the commands in 03_Move_Delete_Items.jcf and 04_Move_Delete_Items.jcf
- Loads 05_CardSchema4_1_02.scm and ddb
- Loads 06_JossModel4_1_02.scm and ddb – Persistent model
- Loads 07_JossControl4_1_02.scm and ddb – Transient and application layer
- Loads 08_Joss4_1_02.scm and ddb – JSM GUI layer
- If Tracker implemented loads 09_ScmControl4_1_02.scm and ddb – Tracker applications and transient layer
- If Tracker implemented loads 10_ScmSchema4_1_02.scm and ddb – Tracker GUI layer
- Checks for any methods in error
- Execute final migration application to
 - Clean-up orphaned binary elements
 - Load menu security file

4.4. Migration for JSA

4.4.1. Commander

Before starting any deployments using JSA 4.1.02, Commander 8.10.0.10 or later MUST be installed on all related servers.

The deployment engine uses a new start up sequence for the target JADE environment that mandates this release of Commander.

4.4.2. JSA

JSA 4.1.02 is supported on JADE 2020 SP 1 (20.0.02) ANSI 64-bit base and latest hot-fixes.

Create an instance of JSA by installing a new JADE environment using JADE 2020 SP 1 plus all latest hot-fixes.

1. Load the following schemas from the \migration directory
 - 05_cardschema4_1_02.scm and ddb
 - 06_jossmodel4_1_02.scm and ddb
 - 07_josscontrol4_1_02.scm and ddb
2. Ensuring the initialization file is appropriate, propagate this instance to each managed server host and replace the existing JSAs.
3. Ensure that the **JSA Files** binaries are included:
 - karma.dll and pdb
 - cnwsqll.dll and pdb
4. For JADECare 24 only (JADE Software Corporation) a new node needs to be defined in the cnwkarma.ctl file as follows:

```
[KarmaWindowsUpdateManager]
Schema=JossControl
App=KarmaWindowsUpdateManager
Path=d:\cnwkarma\server\c_system
Exe=d:\cnwkarma\server\c_bin\jade.exe
Ini=d:\cnwkarma\server\c_bin\cnwkarma.ini
Server=RemoteServer
Launch=True
ClientType=NormalClient
Priority=Normal
Title1=NOGUI
DontImpersonateIfSYSTEM=true
```

4.5. Product Repository

With each JSM release, one or more JADE Releases and/or CardSchema Releases may need to be manually updated. The following defines the product releases that have changed and need to be updated (if they are registered). If any changes are made, then please ensure that the product release is re-registered in JSM.

4.5.1. CardSchema Releases

No changes since release 4.1.01

4.5.2. JADE Releases

There have been no changes to earlier JADECare files associated with various JADE releases and therefore no JADE releases need to be re-registered.

5. Descriptions of Changes and New Features

5.1. Version 4.1.02

5.1.1. Application JossBatch

5.1.1.1. Hot Fix Update Product Repository

Add new ‘action=hotFixUpdateProductRepository’ to provide ability for JSM hotfix to update and re-register items in the Product Repository.

5.1.1.2. Get Property Value

Add new “action=getPropertyValue’ which provides ability to access and return the value of a specified property on any instance of the following classes:

- Root
- ServerHost
- Environment
- JadeEnvironment
- ODBCHost
- ODBCInstance
- ODBCEnvironment.

Refer to the IAG for further details and syntax.

5.1.2. Application KarmaBatchInterface

5.1.2.1. Get Property Value

Add new “action=getPropertyValue’ which provides ability to access and return the value of a specified property on any instance of the following classes:

- Root
- ServerHost
- Environment
- JadeEnvironment
- ODBCHost
- ODBCInstance
- ODBCEnvironment.

Refer to the IAG for further details and syntax.

5.1.3. New Applications

5.1.3.1. Application JossWindowsUpdateManager

This is a new application which will only function at JADECare 24 and handles the JSM functions required for Windows Update Patch Automation.

It is added to the JAWS control file as part of the JSM Migration.

5.1.3.2. Application KarmaWindowsUpdateManager

This is a new application which will only function at JADECare 24 and handles the JSM functions required for Windows Update Patch Automation.

Requires the JAWS control file to be updated, refer to 4.4.2 JSA above for details.

5.1.3.3. Application JossScheduleMgr

This is a new application and now handles all scheduling in JSM. This function was previously performed in JossGeneralEventManager.

It is added to the JAWS control file as part of the JSM Migration.

5.1.4. Maintenance of Central Deployment Repository

This functionality was previously handled by JossGeneralEventManager and has now been moved into its own application as there could be significant delays when the Central Deployment Repository exists on a different server from JSM.

This feature can be turned on again if it had been turned off.

5.1.5. Deployment

5.1.5.1. RPS Node

The following now occurs at the start of a RPS deployment.

If the ini file setting [JadeRps] JSMDeploymentAlterScriptOverride is not defined, the ini file is updated with the value defaulting to true.

When the ini file setting [JadeRps] JSMDeploymentAlterScriptOverride is false, then the values of the alter script settings (see below) are logged and the potential impact of their respective values. The ini file values are NOT updated.

When the ini file setting [JadeRps] JSMDeploymentAlterScriptOverride is true, all of the alter script settings (below) are unconditionally updated to be true.

```
[JadeRps]
AutoRunReorgDropScript
AutoBulkLoadHistoricalTables
DropHistoricalTableOnAddExisting
```

5.1.5.2. Ini File Option [JSMDeployment] JariEnhancedVersionCheck

Default value : false

This is only valid for those JARIs which need to be manually authorized.

When this option specifies **false** or is not defined then the existing paradigm continues which will cause the JARI authorisation to fail should the JADE and CardSchema versions for registered environments not match those when the JARI was built (ie as the result of a restore).

When this option is **true** then enhanced version checks are performed as follows:

1. verify that the JARI is not deploying more than one major JADE release ahead
2. Check that if JADE releases differ and there is no JADE upgrade defined that there are no JADE hotfixes in this JARI as these would be incompatible with the JADE version being run.
3. Check that if JADE releases differ and there is no JADE upgrade defined that there are no CardSchema changes in this JARI as any binaries would be incompatible with the JADE version being run.

5.1.6. Backup, Deployment and Task Scheduling Scripts

The 'Database Log Day's has been added to any scripts that are executed by the backup, deployment or task scheduling modules.

For new variable names are:

- JADE Environment - env_logdays
- ODBC Environment – srv_logdays

5.1.7. Windows Update Patching Automation

Applicable only to JADECare 24 site.

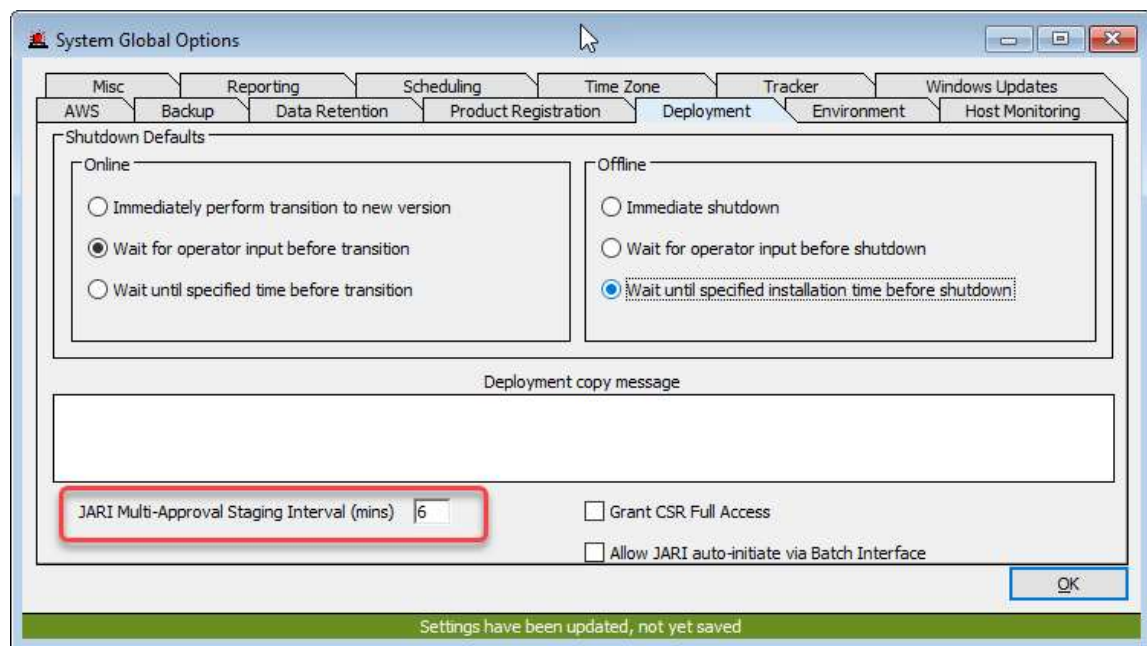
This feature provides for the automation of Windows Update Patching. It facilitates the definition of pre-defined outage windows to cater for Windows Update Patching ranging from downloading, installation and re-booting and to repeat that cycle as long as required and while the window exists.

Enhancements have been made to several forms as well as the introduction of new forms to allow Central Systems a view of what is happening.

The right-click menu items on Server have been extended and now allows for an adhoc reboot.

5.1.8. System Global Options

Provide view and update of JARI Multi-Approval Staging Interval. This interval is used to stage the assembly start time to avoid all JARIs authorized in this manner from creating archives and consuming CPU.



5.1.9. Environment Maintenance

The Deployment sheet has been extended to allow the definition of deployment options and special instructions. The deployment options will override the globally defined deployment options when the 'Use Defaults' is enabled.

5.1.10. Deploy Summary

The deployment summary form has an extra column which will show the number of the associated JARI.

5.1.11. JARI List

The JARI List Form has a new column added which indicates whether a JARI has any Instructions defined (Developer, Authoriser and/or Default Environment).

5.1.12. JARI Authorisation

The JARI Authorisation form has been modified to use any deployment defaults (if enabled) defined for the environment. Once the form has been populated any items so derived can be overridden.

5.1.13. JARI Multi-Approval

Restricted for JADECare 24 use.

JARI Multi-Approval

Select Environment Type: **JADE Third Eye** ☐ Offline JARIs only

Select and Order JARIs

Environment	Release	Description	Created	First Instance
TSTJK6020	344	multi-approval	11/08/22 10:18	TSTJK6020 on CNWIMFJ1G

JARI Deployment Attributes

Environment	Release	Description	Created	First Instance
TESTJK1	123	test multi-approval	11/08/22 09:46	TESTJK1 on CNWIMFJ1F
TSTJK71B	10	test multi-approval	11/08/22 10:18	TSTJK71B on CNWIMFJ1F

JARIs can be reordered by clicking on a row and dr

JARI Multi-Approval

Select Environment Type: **JADE Third Eye** ☐ Offline JARIs only

Select and Order JARIs

Environment	JARI Number	JARI Created	Server	JADE Environment	Database Role	Critical Release	Quick Start	Shutdown Mode	Backup Date	Backup Time	Shutdown Date	Shutdown Time	PostDeploy Backup Journalled	Secondary PreDeploy Backup	Secondary PostDeploy Backup	Secondary PostDeploy Backup Journalled	Secondary Transition Operator Inp
TESTJK1	123	11/08/22 09:46:03	CNWIMFJ1F testjk1	Non-SDS		<input type="checkbox"/>	<input type="checkbox"/>	Operator Input	11/08/22	11:25							
TSTJK6020	344	11/08/22 10:18:02	CNWIMFJ1G tstjk6020	Primary		<input checked="" type="checkbox"/>	<input type="checkbox"/>	Specified Time	15/08/22	17:00	22/08/22	16:00					
			CNWIMFJ1F tstjk6020	Secondary									<input checked="" type="checkbox"/>	<input type="checkbox"/>	<input type="checkbox"/>	<input type="checkbox"/>	<input checked="" type="checkbox"/>
			CNWIMFJ1G tstjk602r	RPS									<input checked="" type="checkbox"/>	<input type="checkbox"/>	<input type="checkbox"/>	<input type="checkbox"/>	<input checked="" type="checkbox"/>

OK

This new form allows the selection of an environment type (ie JADE Third Eye) and online or offline deployments.

This selection criteria will populate a table with those JARIs that meet the criteria.

One or more of these JARIs can be selected and then re-ordered (using drag and drop).

The JARIs selected will then display a number of options, in the **JARI Deployment Attributes** sheet, (derived from environment deployment options, global options) which can be overridden and then be authorised.

Such authorisation will schedule each JARI using the global JARI Multi-Approval Staging Interval to spread the assembly processes.

5.1.14. System View

When right-clicking on a Server object two new menu options are provided as follows:

- Monitor System Stats
- Monitor Processes

Clicking on either of these will open and start the relevant monitoring forms. These forms can still be obtained via the main Monitoring item on the MDI Frame.

5.2. Version 4.1.01

5.2.1. Performance Alert Sets

When logical disk performance counters are checked, it is now possible to ignore volumes which contain the literal ‘_JSMIgnore’ (case-insensitive).

A logical disk volume labelled ‘Page Disk _jsmIgnore’ would be ignored and, as this typically is a smaller sized disk, this feature can avoid unwanted performance alerts.

5.2.2. Deployment

5.2.2.1. Auto-Deployment Definitions

The Environment Maintenance form and persistent model has been changed to allow the definition of multiple auto-deployment definitions.

See GUI changes below and IAG for in-deploy detail.

5.2.2.2. JadeAdmin, Autodist, cnwplugin Automatic Updates

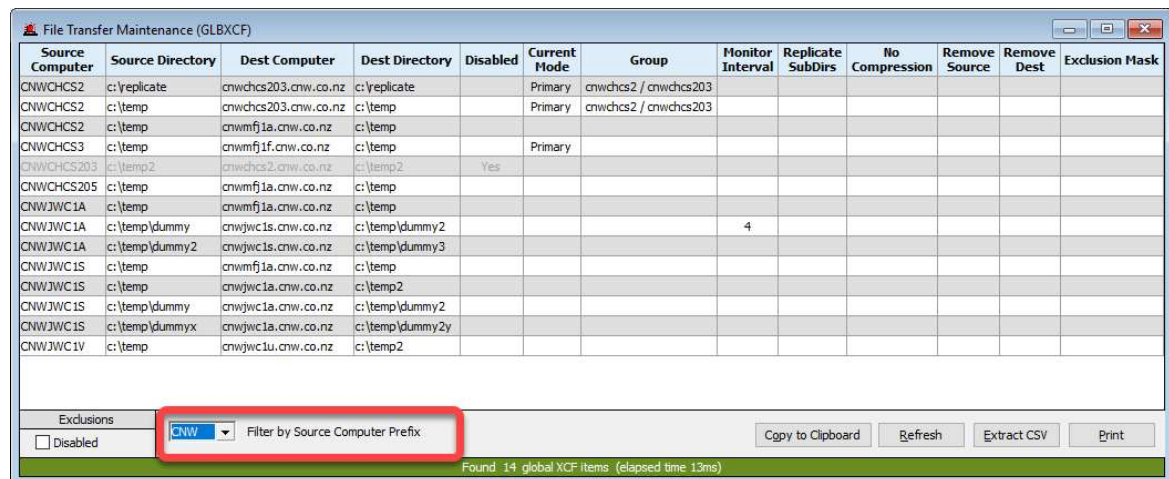
Each deployment will now check that the following deployed code files have the same version as those registered for the base release defined for that environment:

- jadeadmin.exe
- autodist.dll
- cnwplugin.dll

If the versions differ, then the above code files will be unconditionally deployed (including corresponding pdb files) for the requisite distributions applicable.

5.2.3. GUI Changes

5.2.3.1. GlbXcf Summary



Source Computer	Source Directory	Dest Computer	Dest Directory	Disabled	Current Mode	Group	Monitor Interval	Replicate SubDirs	No Compression	Remove Source	Remove Dest	Exclusion Mask
CNWCHCS2	c:\replicate	cnwchcs203.cnw.co.nz	c:\replicate		Primary	cnwchcs2 / cnwchcs203						
CNWCHCS2	c:\temp	cnwchcs203.cnw.co.nz	c:\temp		Primary	cnwchcs2 / cnwchcs203						
CNWCHCS2	c:\temp	cnwfmf1a.cnw.co.nz	c:\temp									
CNWCHCS3	c:\temp	cnwfmf1f.cnw.co.nz	c:\temp		Primary							
CNWCHCS203	c:\temp2	cnwchcs2.cnw.co.nz	c:\temp2	Yes								
CNWCHCS205	c:\temp	cnwfmf1a.cnw.co.nz	c:\temp									
CNWJWC1A	c:\temp	cnwfmf1a.cnw.co.nz	c:\temp									
CNWJWC1A	c:\temp\dummy	cnwjwc1s.cnw.co.nz	c:\temp\dummy2				4					
CNWJWC1A	c:\temp\dummy2	cnwjwc1s.cnw.co.nz	c:\temp\dummy3									
CNWJWC1S	c:\temp	cnwfmf1a.cnw.co.nz	c:\temp									
CNWJWC1S	c:\temp	cnwjwc1a.cnw.co.nz	c:\temp2									
CNWJWC1S	c:\temp\dummy	cnwjwc1a.cnw.co.nz	c:\temp\dummy2									
CNWJWC1S	c:\temp\dummyx	cnwjwc1a.cnw.co.nz	c:\temp\dummy2y									
CNWJWC1V	c:\temp	cnwjwc1u.cnw.co.nz	c:\temp2									

Exclusions: ☐ Disabled CNW Filter by Source Computer Prefix

Found 14 global XCF items (elapsed time 13ms)

A new combo box is provided that allows the display to be filtered where the first 3 characters of the source computer matches that selected in the combo box.

5.2.3.2. Environment Maintenance

The deployment related details have been moved from the default sheet onto a new deployment sheet.

The auto-deployment details are now shown in a table as multiple entries can now be defined, if required. Note that there is a minimum of 2 hours required between auto-deployment definitions.

Refer to the IAG for more details.

5.2.3.3. Jade Environment Details Summary

The following columns have been removed as they are now shown in the new form 'Jade Environment Licences Summary'.

- Licence Expiry
- Licence Details
- Remaining Process Last Month
- Remaining Process Current Month

5.2.3.4. Jade Environment Licences Summary

This is a new summary form intended for use by CSMs.

Host	Environment Name	JADE Version	CardSchema Version	Application Version	Licence Expiry	Licence Details	Remaining Processes Last Month	Remaining Processes Current Month	Max JADECare Processes Last Month	Max JADECare Processes Current Month	Developer ID/Email	FMS Assignee
QNWMP31B	JOSSE4101	20.0.01	4.1.01.000	4.1.01.001	Never	Unrestricted, Unlimited size, 10 developers, 500 servers,				5	mjagers@jadeworld.com	jmsupport
QNWMP31G	TESTENNNAMEOF20BYTES	18.0.01.055	4.0.02.002		Never	Enterprise Development, 50Gb size, 15 developers, 100 processes,				2		
QNWMP31F	TESTK1	6.3.12.021	3.5.04.005	1.1.01	Never	Enterprise Development, 50Gb size, 15 developers, 100 processes,				3	mjagers@jadeworld.com	jmsupport
QNWMP31F	TESTK10	7.1.08.034	3.8.03.018	1.1.01	Never	Enterprise Development, 50Gb size, 15 developers, 100 processes,	93	92		8	mjagers@jadeworld.com	jmsupport
QNWMP31F	TESTK2	6.3.12.021	3.5.04.005		Never	Enterprise Development, 50Gb size, 15 developers, 100 processes,				1	mjagers@jadeworld.com	jmsupport
QNWMP31G	TESTK3	16.0.02.043	3.9.03.016		Never	Unrestricted, Unlimited size, 40 developers, 260 processes,				1		
QNWMP31G	TESTK4	20.0.01.010	4.0.03.000		Never	Unrestricted, Unlimited size, 40 developers, 260 processes,	249	248		5	mjagers@jadeworld.com	jmsupport
QNWMP31F	TESTK40B	20.0.01.010	4.0.03.000		Never	Enterprise Development, 50Gb size, 15 developers, 100 processes,				2	mjagers@jadeworld.com	jmsals
QNWMP31F	TESTLANE1	16.0.02.030	3.9.03.004		Never	Enterprise Development, 50Gb size, 15 developers, 100 processes,				7	mjagers@jadeworld.com	cnvjsm
QNWMP31G	TESTLUNCD	20.0.01.001	4.0.03.002	1.01.111	Never	Enterprise Development, 50Gb size, 15 developers, 100 processes,	81	81		13	mjagers@jadeworld.com	jmsals
QNWMP31G	TESTLUNCD	20.0.01.033	4.0.03.000	1.2.34	Never	Enterprise Development, 50Gb size, 15 developers, 100 processes,	97	91		3	mjagers@jadeworld.com	jmsupport
QNWMP31F	TESTK6020	18.0.01.086	4.0.02.009	1.01.001	Never	Unrestricted, Unlimited size, 5 developers, 260 processes,				3	mjagers@jadeworld.com	jmsupport
QNWMP31G	TESTK6020	18.0.01.086	4.0.02.009	1.01.001	Never	Unrestricted, Unlimited size, 5 developers, 260 processes,	245	253		7	mjagers@jadeworld.com	cnvjsmtoolset
QNWMP31G	TESTK602R	18.0.01.086	4.0.02.009	1.02.003	Never	Unrestricted, Unlimited size, 1 developer, 260 processes,	257	257		3	mjagers@jadeworld.com	cnvjsmtoolset
QNWMP31F	TESTK71	18.0.01.055	4.0.02.003	8.4.01.999	Never	Enterprise Development, 50Gb size, 15 developers, 100 processes,				3	mjagers@jadeworld.com	jmsupport
QNWMP31F	TESTHEXAM	7.1.05.004	3.8.01.012		Never	Enterprise Development, 50Gb size, 15 developers, 100 processes,				4	mjagers@jadeworld.com	jadjsm
QNWMP31G	TEST3MT	16.0.02.027	3.9.02.004	8.6.01.110	Never	Unrestricted, Unlimited size, 40 developers, 260 processes,				8	mjagers@jadeworld.com	jmsupport
QNWMP31G	TESTSTAMP5	16.0.02.038	3.9.03.014		Never	Unrestricted, Unlimited size, 10 developers, 500 processes,				2	mjagers@jadeworld.com	jmsupport
QNWMP31F	TEST3MT	16.0.02.024	3.9.03.013	8.6.02.010	Never	Unrestricted, Unlimited size, 2 developers, 250 processes,	245	243		6	jgdev@jadelogistics.com	jmsupport
QNWMP31G	TESTSUA	20.0.01.001	4.0.02.009		Never	Enterprise Development, 50Gb size, 15 developers, 100 processes,	97	97		3	mjagers@jadeworld.com	jmsupport

Exclusions: ☒ Disabled ☒ Non-Managed ☐ Non-SDS

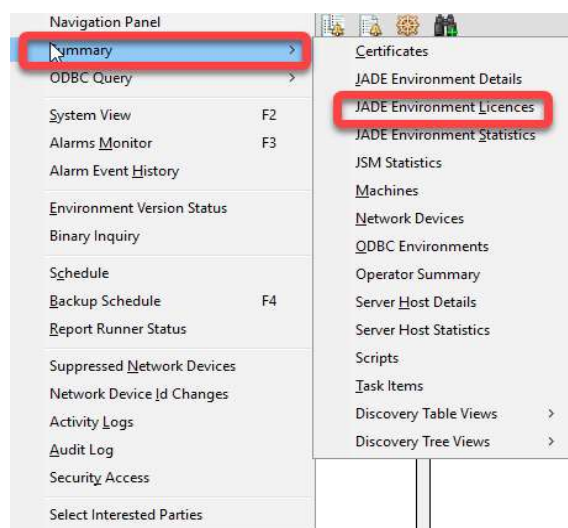
Selected 20 of 35 Jade Database Environments. (elapsed time = 19ms)

Buttons: Refresh Copy to Clipboard Edit Info Extract CSV Print

It provides the standard ability to:

- Copy all or selected rows to the clipboard
- Be extract to a csv file.

This is available via the View | Summary | Jade Environment Licences menu selection:



5.2.3.5. Jade Environment Maintenance Form

The screenshot shows the 'Jade Environment Maintenance' window. It has a tabbed interface with tabs for Basic, Alarms & Exceptions, Application Monitoring, App Server Certificates, Database Structures, and Discovery. The 'Basic' tab is active. It contains several sections: 'Statistics Logging' with input fields for JOM / Tran Stats Interval (60), Process Stats Interval (60), and Disk Usage Check Interval (120); 'Purchased / Rented Licence' with fields for Purchased Processes (20), Date of Purchase (10/05/18), Max Processes (8), Max Process Timestamp (31/03/21 11:35), and Rented Processes (None); 'JADECare Management Processes' (highlighted with a red box) with a field for Billing Licences Defined (0) and a 'Billing Licences Exceeded' status; 'Data Retention Settings' with fields for Statistics retention (90) and Host Environment Patch retention (730); and 'Miscellaneous' with a 'Reorg free space factor' (2.3). Below these are two tables: 'Process Licences Remaining' and 'JADECare Management Processes Used' (both highlighted with red boxes). The 'Process Licences Remaining' table shows data for months from Apr 2020 to Mar 2021. The 'JADECare Management Processes Used' table shows data for months from Apr 2020 to Mar 2021, with the last row (Mar 2021) showing 8 remaining and a timestamp of 31/03/21 11:35:12. At the bottom, there are 'Inspect', 'Delete', and 'OK' buttons, and a 'Settings saved' message.

Two addition group boxes have been added:

- JADECare Management Processes
- JADECare Management Processes Used

JADECare Management Processes

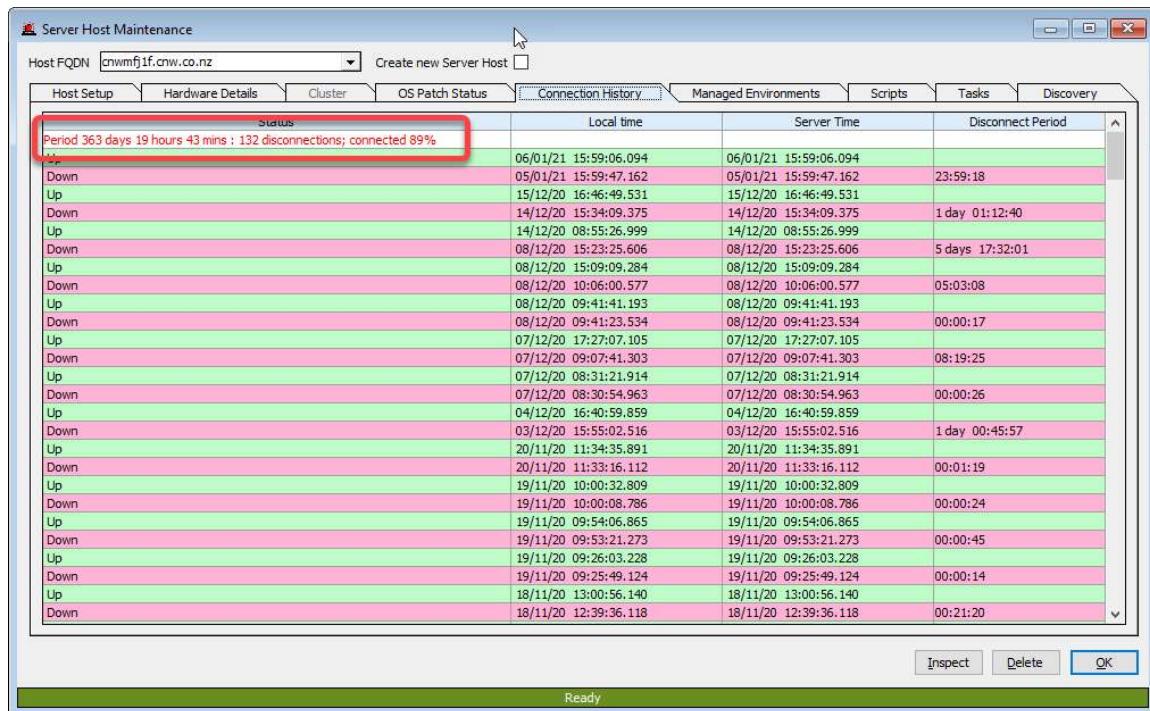
This shows the maximum number of JADECare management processes that have been used to-date for the current month. The date/time of when the maximum number of process was detected is also provided.

There is also the option to define the number of Billing Licences Defined in the licencing system to be entered and when this is done, the Billing Licences Exceeded is calculated and will display when greater than zero.

JADECare Management Processes Used

This shows the maximum number of JADECare management processes for each month for the last year. The derivation of this is obtained as each application registers / de-registers in JSM.

5.2.3.6. Server Host Maintenance Form



Server Host Maintenance

Host FQDN: cnwmfj1f.cnw.co.nz Create new Server Host ☐

Host Setup Hardware Details Cluster OS Patch Status **Connection History** Managed Environments Scripts Tasks Discovery

Status	Local time	Server Time	Disconnect Period
Period 363 days 19 hours 43 mins : 132 disconnections; connected 89%			
Up	06/01/21 15:59:06.094	06/01/21 15:59:06.094	
Down	05/01/21 15:59:47.162	05/01/21 15:59:47.162	23:59:18
Up	15/12/20 16:46:49.531	15/12/20 16:46:49.531	
Down	14/12/20 15:34:09.375	14/12/20 15:34:09.375	1 day 01:12:40
Up	14/12/20 08:55:26.999	14/12/20 08:55:26.999	
Down	08/12/20 15:23:25.606	08/12/20 15:23:25.606	5 days 17:32:01
Up	08/12/20 15:09:09.284	08/12/20 15:09:09.284	
Down	08/12/20 10:06:00.577	08/12/20 10:06:00.577	05:03:08
Up	08/12/20 09:41:41.193	08/12/20 09:41:41.193	
Down	08/12/20 09:41:23.534	08/12/20 09:41:23.534	00:00:17
Up	07/12/20 17:27:07.105	07/12/20 17:27:07.105	
Down	07/12/20 09:07:41.303	07/12/20 09:07:41.303	08:19:25
Up	07/12/20 08:31:21.914	07/12/20 08:31:21.914	
Down	07/12/20 08:30:54.963	07/12/20 08:30:54.963	00:00:26
Up	04/12/20 16:40:59.859	04/12/20 16:40:59.859	
Down	03/12/20 15:55:02.516	03/12/20 15:55:02.516	1 day 00:45:57
Up	20/11/20 11:34:35.891	20/11/20 11:34:35.891	
Down	20/11/20 11:33:16.112	20/11/20 11:33:16.112	00:01:19
Up	19/11/20 10:00:32.809	19/11/20 10:00:32.809	
Down	19/11/20 10:00:08.786	19/11/20 10:00:08.786	00:00:24
Up	19/11/20 09:54:06.865	19/11/20 09:54:06.865	
Down	19/11/20 09:53:21.273	19/11/20 09:53:21.273	00:00:45
Up	19/11/20 09:26:03.228	19/11/20 09:26:03.228	
Down	19/11/20 09:25:49.124	19/11/20 09:25:49.124	00:00:14
Up	18/11/20 13:00:56.140	18/11/20 13:00:56.140	
Down	18/11/20 12:39:36.118	18/11/20 12:39:36.118	00:21:20

Inspect Delete OK

Ready

The connection history table now shows the following details in the first row of the display:

- The period covered by the display
- The number of disconnections for the period
- The percentage time connected for the period

Be aware that every reconnection incurs some overhead in network traffic and messaging/updating between JSM, JSA and every managed environment on the server concerned. It is expected that connections are generally stable with few, if any, disconnections.

5.2.3.7. System Subview – Jade Environment

JADE Environment TESTJK10 on CNWMFJ1F

Class & Oid String	JadeEnvironment - 2106.341
JADE Environment Name	TESTJK10
Server Host FQDN	cnwmfj1f.cnw.co.nz (143.96.128.214)
Master Environment Id	TESTJK10
Type	Database
Remote Environments	0
Production Mode	false
Database Type	Development System
Database SDS Role	Not an SDS environment
Currently Active	true
Currently Connected To JSM	31/03/21 11:34:31
Journalled Backup	false
Database Encrypted	Disabled
Uses Partitions	false
Uses UDR Files	false
Commandline Name	
Pinging Active	false
Ping Interval	-1
Ping Response Wait Time	0
FMS Assignee	jmsupport
Dev Email	mjagers@jadeworld.com
Licence Information	
Licenced To	JSC JADECare Dev
Licence Type	Enterprise Development
Licenced Max Db Size	50 GB
Licences	Developers = 15
	Processes = 100
Licence Expiry Date	Never
Version Information	
JADE Version	7.1.08.034 (ANSI)
CardSchema Version	3.8.03.018
Application Version	1.1.01
Deployment Regime	2
Database Distribution	x64-msoft-win64
Client Distributions	i686-msoft-win32
	x64-msoft-win64
Database Cache Size	4.0 MB
Registered Client Process Count	3
Statistics (as at 31/03/21 14:23)	
Processes Remaining	97
Fat Client Process Count	2
Thin Client Process Count	1
Entry Logged	31/03/21 14:23:57
Rented Licences	
Purchased Processes	20
Purchased Date	10/05/18
Maximum Processes	8
Maximum Processes Timestamp	31/03/21 11:35
Rented Licences	None
JADECare Licences	
Billing JADECare Processes	0
Maximum JADECare Processes	8
Maximum JADECare Processes Timestamp	31/03/21 11:35
Exceeded Billing JADECare Licences	None

Copy to clipboard Print

The JADECare Licences detail (highlighted) will be available if the user role is CSR.

5.2.4. JossBatch Application Functions

5.2.4.1. Application Monitoring Update

Provides the ability to switch monitoring for critical applications to on or off.

Refer to IAG for details.

5.2.4.2. Change XCF Parameters

This new function provides a way to update various attributes for a specified XCF item.

To identify the XCF item concerned, the following values must be provided:

- source computer
- source directory
- destination computer
- destination directory

Any one or more of the following attributes can be modified:

- source computer
- source directory
- destination computer
- destination directory
- disabled status

Refer to IAG for details.

5.2.4.3. Check Connected

Provides the ability to check whether all servers are connected to JSM (via JSA)

Refer to IAG for details.

5.2.4.4. Initiate Global Parameter Distribution

The existing function will work to perform a distribution to ALL servers.

However an extra argument is now provided to issue the Global Parameters to just the servers for a specified customer.

Command line syntax:

```
jadclient path=<system path> ini=<ini file> schema=JossControl app=JossBatch  
server=multiUser endJade action=initiateGlbParamDistribution [customer=<customer  
prefix>]
```

5.2.4.5. JMT Comparison Build

Provides the ability to build a comparison file for a specified JADE Master Terminal master environment for a nominated and registered JADE Master Terminal release. The intent is that the generated file will be used to compare that the deployed databases and remotes has the expected files present and doesn't have files present from earlier releases that are no longer pertinent.

Refer to IAG for details.

5.2.4.6. Switch XCF Group

Provides the ability to force a switch of a XCF group

Refer to IAG for details.

5.2.5. KarmaBatchInterface Application Functions

5.2.5.1. JMT Comparison Compare

Using the comparison file built in JSM for a specified JADE Master Terminal master environment for a nominated and registered JADE Master Terminal release perform the comparison on the database or remote fat-client. The option to log and/or to open a Tracker is also provided.

Refer to IAG for details.

5.2.5.2. Restore an Environment from Backup

Provides the ability to restore an environment from backup

Refer to IAG for details.

5.2.6. Webhook Endpoint

Replacement for external application webhook application WebNarc. JSM now natively provides a webhook endpoint to support JSON payloads. Payload processing is configured around soft-coded scripting within JSM.

5.2.6.1. Script Builder

Accepts a webhook payload in JSON format and allows a user to select items of interest to be incorporated into a webhook payload processing script.

Refer to IAG for details.

5.2.6.2. Token Maintenance

Creates unique tokens to be used by webhook providers. The tokens are used for web authentication by the endpoint when receiving a webhook payload.

Refer to IAG for details.